



NDMPADM Design Document

Bikrant Singh

**Revision 0.4
June 26, 2007**

Table of Contents

1 .Introduction.....	3
2 .The command and syntax.....	3
3 .The sub commands.....	3
4 .Design Overview.....	4
5 .Source Files.....	5
6 .Messages.....	5
7 .Internationalization.....	5
8 .Packaging.....	5

1 Introduction

Network Data Management Protocol Administration tool or ndmpadm is a command that can be used to query the ndmpd service to get active sessions information, kill session, query backup devices, and set or get the current NDMP properties. ndmpadm has set of sub commands, many with their own direct object, which are described in the section for that sub command. Some sub commands have options which are described in the related section.

The command and syntax will be compliance with Command Line Interface Paradigm(CLIP) specification and guideline.

2 The command and syntax

“ndmpadm” is the name of the CLI command which will be stored in /usr/sbin.

The syntax is as follows:

```
# ndmpadm subcommand [option] [direct-object]
```

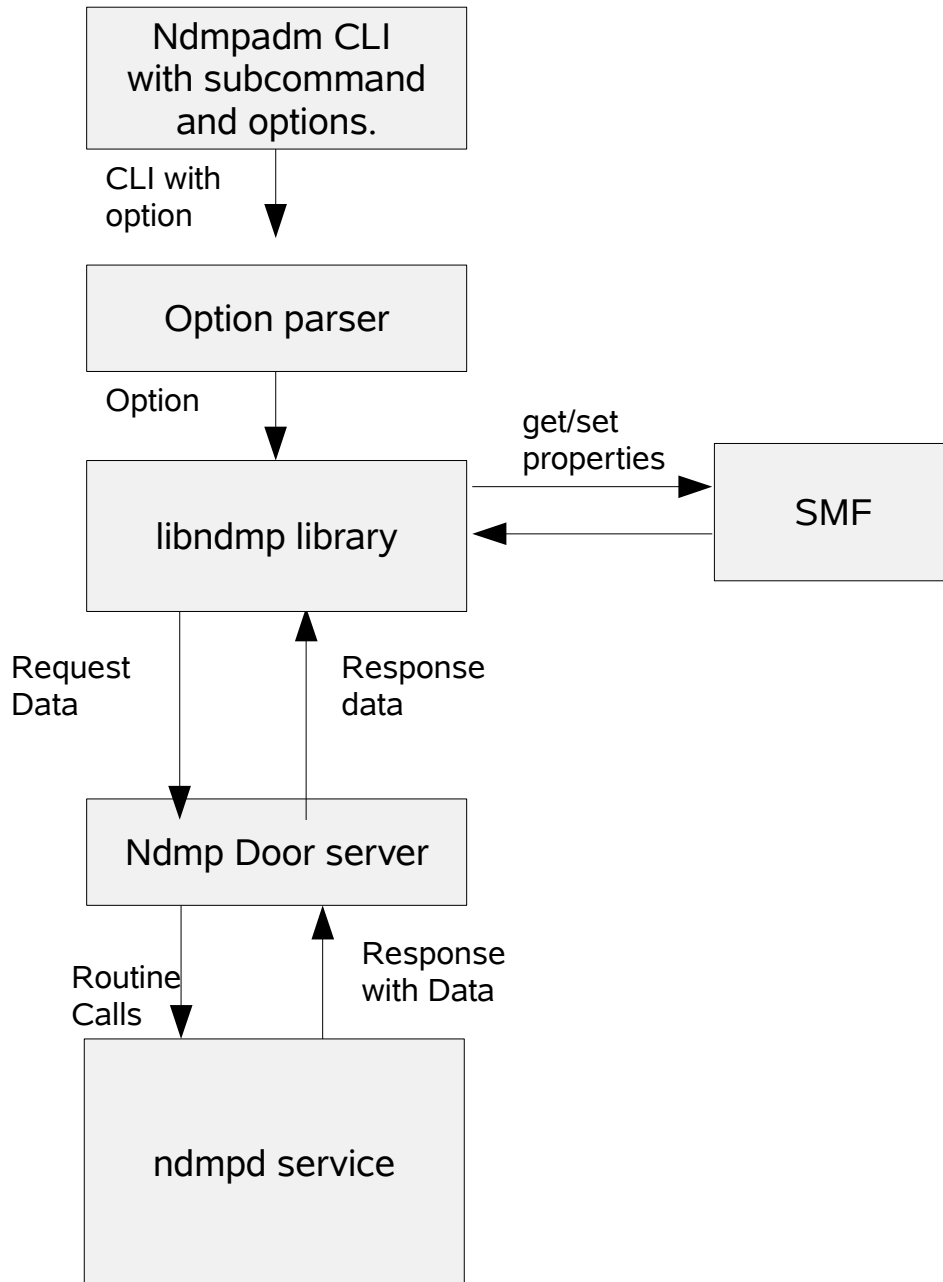
3 The sub commands

Sub commands for the ndmpadm are:

- | | |
|---------------|--|
| -? | - Shows all the sub commands and options. |
| set | - Set the value of an NDMP property. |
| get | - Get the value of an NDMP property. |
| show-devices | - Get a list of tape hardware connected to the server. |
| Show-sessions | - Display the active NDMP sessions. |
| kill-sessions | - Kill one or all active sessions. |

See the ndmpadm man page for subcommand and options for detail description.

4 Design Overview



ndmpadm block diagram

The ndmpadm is a cli application which uses libndmp library routines to get information from ndmpd service. It also uses library routines to set/get properties to/from SMF. The library routines uses door client request if the information need to go or come from ndmpd service. The library routines also communicate with SMF directly for setting and getting properties value.

5 Source Files

ndmpadm client file

usr/closed/cmd/ndmpadm/ndmpadm_main.c

This file will contain the ndmpadm main function, options parsing code and routines, libndmp library routine call code for each option and structures and definition.

usr/closed/cmd/ndmpadm/ndmpadm_print.c

This file will contain all the printing routines ndmpadm uses to print detailed structures of data.

usr/closed/cmd/ndmpadm/ndmpadm.h

This file will contain structures and definition used in ndmpadm side of the files.

6 Messages

All info/error messages will be printed to the terminal.

7 Internationalization

All messages which user can see through ndmpadm will go through gettext() routine to support I18N.

8 Packaging

The ndmpadm binary will be delivered through NDMP packaged SUNWndmpu.